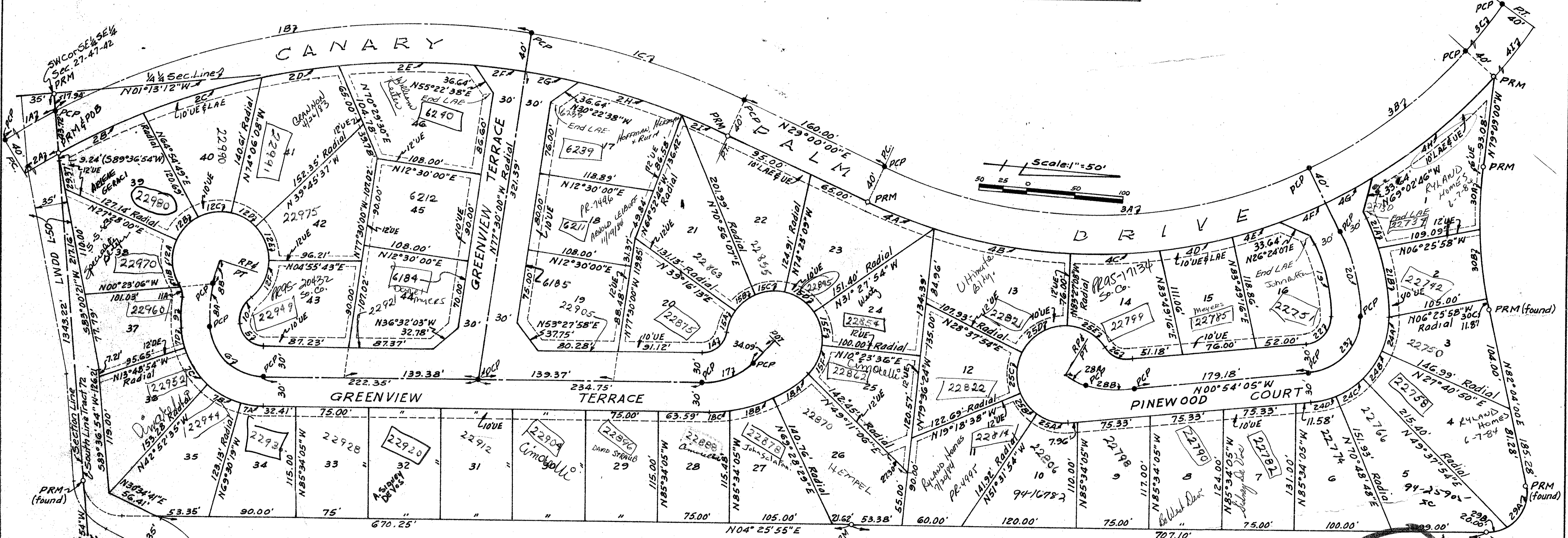


Nº	Delta	Radius	Tangent	Arc	Chord	Nº	Delta	Radius	Tangent	Arc	Chord	Nº	Delta	Radius	Tangent	Arc	Chord	Nº	Delta	Radius	Tangent	Arc	Chord	Nº	Delta	Radius	Tangent	Arc	Chord						
1	63°30'00"	807.99	500.00	895.48	850.35	3B	22°30'14"	514.29	—	202.00	200.70	7B	26°37'43"	85.00	—	39.50	39.15	12F	47°31'36"	50.00	—	41.47	40.30	20	25°45'14"	204.38	46.72	91.87	91.10	26	62°10'55"	25.00	—	27.13	25.82
1A	10°56'00"	"	—	154.18	153.95	3C	79°00'27"	"	—	709.18	654.31	7C	29°03'41"	"	—	43.11	42.65	12F	47°31'36"	50.00	—	41.47	40.30	20	25°45'14"	204.38	46.72	91.87	91.10	26	62°10'55"	25.00	—	27.13	25.82
1B	36°04'00"	"	—	508.62	500.26	4	151°50'00"	554.29	2209.44	1468.86	1075.26	7D	13°25'48"	"	—	19.92	19.88	14	82°29'19"	25.00	—	35.99	32.96	21A	07°19'31"	"	—	29.96	29.98	28	39°33'26"	120.00	36.18	70.28	69.28
1C	16°30'00"	"	—	292.68	231.88	4A	07°45'10"	"	—	75.00	74.94	8	23°24'21"	179.79	36.00	71.00	70.50	15A	27°19'37"	50.00	—	23.85	23.62	21B	18°25'30"	"	—	75.39	75.06	28A	11°56'12"	"	—	25.00	24.95
2	63°00'00"	767.99	475.25	808.25	851.15	4B	14°41'58"	"	—	142.20	141.81	8A	14°09'50"	"	—	42.97	42.85	15B	31°39'54"	"	—	27.63	27.28	22	84°40'00"	29.70	27.06	49.89	40.00	28B	21°37'14"	"	—	45.28	45.01
2A	09°38'58"	"	—	129.34	129.19	4C	09°25'27"	"	—	91.17	91.07	8B	09°14'31"	"	—	28.03	28.00	15C	34°40'45"	"	—	30.26	29.80	23	"	59.70	54.39	88.22	80.41	29	102°21'55"	40.00	49.72	71.47	62.33
2B	07°05'15"	"	—	95.00	94.94	4D	07°49'45"	"	—	75.74	75.68	9	08°42'52"	203.79	—	31.00	30.97	15D	42°55'15"	"	—	37.46	36.59	24	"	89.70	81.72	132.55	120.82	29A	73°42'55"	"	—	51.47	47.99
2C	09°32'58"	"	—	128.00	127.85	4E	05°10'06"	"	—	50.00	49.98	10	52°50'24"	36.43	—	33.78	32.59	15E	41°51'30"	"	—	36.53	35.72	24A	23°14'55"	"	—	36.40	36.15	29B	28°39'00"	"	—	20.00	19.79
2D	06°07'03"	"	—	82.00	81.96	4F	05°26'53"	"	—	52.71	52.69	11	35°59'33"	25.00	—	15.70	15.45	15F	38°47'29"	"	—	33.85	33.21	24B	21°57'04"	"	—	34.37	34.16	30	18°47'00"	453.45	75.00	148.65	147.99
2E	10°21'04"	"	—	138.75	138.56	4G	"	"	—	"	"	11A	27°02'36"	"	—	11.80	11.69	"	"	"	—	"	"	24C	21°10'54"	"	—	33.16	32.97	30A	07°45'30"	"	—	61.40	61.35
2F	04°14'43"	"	—	56.90	56.89	4H	07°08'21"	"	—	165.00	164.39	11B	08°56'57"	"	—	3.90	3.90	17	45°14'50"	70.90	29.55	55.99	54.55	24D	15°41'58"	"	—	24.58	24.50	30B	09°31'28"	"	—	75.38	75.29
2G	"	"	—	"	"	4I	79°00'27"	"	—	764.93	705.20	12A	55°07'48"	50.00	—	48.11	46.28	18	"	135.14	56.32	106.72	103.97	25A	39°22'11"	50.00	—	34.36	33.68	30C	01°30'01"	"	—	11.87	11.87
2H	08°22'31"	"	—	112.26	112.16	5	85°10'59"	25.00	—	37.17	33.84	12B	37°26'49"	"	—	32.68	32.10	18A	20°17'23"	"	—	47.85	47.60	25B	32°13'16"	"	—	28.12	27.75	"	"	"	—	"	"
2I	03°52'46"	"	—	52.00	51.99	6	"	55.00	—	81.77	74.44	12C	40°59'03"	"	—	35.77	35.01	18B	20°06'45"	"	—	47.44	47.19	25C	47°56'32"	"	—	41.84	40.63	"	"	"	—	"	"
3	151°50'00"	514.29	2050.00	1362.87	997.66	7	"	85.00	—	126.37	115.05	12D	34°20'30"	"	—	29.97	29.52	18C	05°50'42"	"	—	13.97	13.78	25D	67°54'58"	"	—	59.27	55.86	"	"	"	—	"	"
3A	50°19'19"	"	—	451.63	437.31	7A	16°03'46"	"	—	23.83	23.75	12E	44°41'20"	"	—	39.00	38.02	19	25°45'14"	174.38	39.87	78.38	77.73	25E	54°43'57"	"	—	47.76	45.97	"	"	"	—	"	"

68



NOTES

- Bearings are based on S89°36'54"W along the south line of Section 27, T47S, R42E (the south line of Tract 72) as shown on sheet 8 of 8 of the plat of Boca Del Mar No. 7.
- o indicates Permanent Reference Monument (PRM).
- indicates Permanent Control Point (PCP).
- 4UE indicates utility easement (10 feet adjacent to street R/W and 6 feet each side of lot line where shown).
- 5.DE indicates Drainage Easement (6 feet each side of lot line where shown).
- 6.LAE indicates limited access easement over which there shall be no ingress or egress.
- There will be no trees, shrubs or buildings on utility or drainage easements.
- Net area = 12.89 Acres.
- No. of units = 46
- Density = 3.57 units/Acre.

AREA 12.89 AC
 UNITS 46
 DENSITY 3.57 U/A

See site plan for setbacks

27/47/42

39

A PLANNED UNIT DEVELOPMENT

THE GREENS

0205-36B4

68

A PORTION OF SECTION 27, TOWNSHIP 47 SOUTH, RANGE 42 EAST, PALM BEACH COUNTY, FLORIDA; INCLUDING A REPLAT OF A PORTION OF TRACT 72, BOCA DEL MAR NO 7, P.B. 30, PGS 210-217, PUBLIC RECORDS PALM BEACH COUNTY, FLORIDA
 WALTER A. CORNELL, INC. CONSULTING ENGINEERS & SURVEYORS BOCA RATON, FLORIDA

This instrument was prepared by Kevin M. Cornell and Walter A. Cornell, Jr. of Walter A. Cornell, Inc. 24 S.E. 4th St., Boca Raton, Florida, 33432.